

MODEL		AWHP09FDELS									
Heat pump performance		Min.			Nominal			Max.			
Heating capacity/Rated capacity/COP at A7/W35y	kW	1,92	0,41	4,68	6,69	1,47	4,55	8,98	1,98	4,54	
Heating capacity/Rated capacity/COP at A2/W35y	kW	1,78	0,44	4,05	5,93	1,48	4,01	8,32	1,92	4,33	
Heating capacity/Rated capacity/COP at A-7/W35y	kW	1,58	0,48	3,29	4,40	1,39	3,17	5,61	1,67	3,36	
Heating capacity/Rated capacity/COP at A-10/W35y	kW	1,45	0,49	2,96	3,92	1,37	2,86	5,41	1,79	3,02	
Heating capacity/Rated capacity/COP at A-15/W35y	kW	1,33	0,49	2,71	3,02	1,34	2,25	4,87	1,79	2,72	
Heating capacity/Rated capacity/COP at A7/W45y	kW	1,87	0,43	4,35	6,34	1,56	4,06	8,54	2,11	4,05	
Heating capacity/Rated capacity/COP at A2/W45y	kW	1,82	0,45	4,04	6,15	1,92	3,20	7,76	2,20	3,53	
Heating capacity/Rated capacity/COP at A-7/W45y	kW	1,42	0,48	2,96	4,12	1,65	2,50	6,67	2,14	3,12	
Heating capacity/Rated capacity/COP at A-10/W45y	kW	1,36	0,51	2,67	3,93	1,60	2,46	5,96	2,11	2,82	
Heating capacity/Rated capacity/COP at A-15/W45y	kW	1,13	0,52	2,17	3,56	1,36	2,62	5,15	2,15	2,40	
Heating capacity/Rated capacity/COP at A7/W55y	kW	1,81	0,43	4,21	5,19	1,24	4,19	8,84	2,18	4,06	
Heating capacity/Rated capacity/COP at A-25/W45y	kW	1,15	0,56	2,05	3,21	1,56	2,06	4,67	2,23	2,09	
Cooling capacity/Rated capacity/EER at A35/W7y	kW	1,74	0,42	4,14	5,89	1,47	4,01	7,78	1,97	3,95	
Rated operating current at A7/W35	A	6,2									
Maximum operating current	A	16									
Power supply	V/F/P	230V/50Hz/1F									
Compressor	Tip	Inverter DC, EVI, Twin Rotary									
Condenser	Tip	Braze plate heat exchanger, stainless steel 316A									
Pressure drop at nominal flow rate	kPa	11									
Ventilator	Tip	BLDC Inverter Variable Speed									
	Each	1									
Nominal fan air flow rate	m <sup>3</sup> /h	2000									
Nominal fan power	IN	75									
Maximum outlet temperature	ȳ	60									
Refrigerant quantity	kg	1,6									
Water connection	inch	G1									
Circulation pump	Tip	BLDC Inverter Variable Speed									
	IN	10-85									
	l/min	24,9									
Ambient operating temperature	ȳ	Heating: -25~25									
		ACM: -25~+45									
	ȳ	Cooling: +20~+45									
		Heating: -25~25									
ȳ	ACM: -25~+45										
	Cooling: +20~+45										
Control panel	Tip	4", color, touch, WiFi, English, WiFi, detachable									
Outdoor unit size (HxWxD)	mm	1003x1059x404									
Indoor unit size (HxWxD) (FULL model)	mm	1017x600x600									
Net weight (inside/outside), approx.	kg	75/45									

**ALTAL™ , Inverter, EVI, cooling/heating, DHW, FULL SPLIT.**

As the elite of smart heat pumps, the ALTAL™ AWHP Series Heat Pump perfectly combines the requirements and EVI technology with inverter to produce up to 60oC domestic hot water, as well as heating/cooling stable temperature of the house even below -25oC.

\* Wider ambient temperature range for stable operation.

\* 25% higher heating capacity and 17% higher COP higher than existing MONOBLOC or SPLIT type heat pumps.

\* High water temperature outlet.

**Inverter technology.**

Unlike the traditional single-speed compressor heat pump, which periodically starts and stops to adjust the heating and cooling performance, the full inverter heat pump uses a variable speed compressor that can automatically adjust the required power to the lowest energy consumption and maintain the best temperature in different climate conditions. When the heating demand is high, the inverter compressor and fan motor will start to run at high speed, conversely, they will run at low speed when

the thermal requirement is low.

ALTAL™ DC Inverter technology allows the heat pump to adjust its frequency from 30 Hz to 120 Hz according to the actual heating requirements. With this technology, ALTAL™

The F series achieves an energy level of A+++ according to the ErP directive.

\* Extremely high COP.

\* Reduces heating time.

\* Energy savings and reduction in electricity bills.

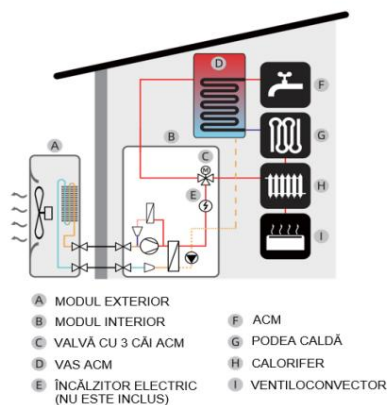
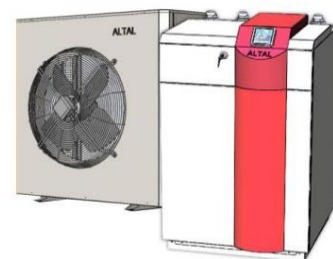
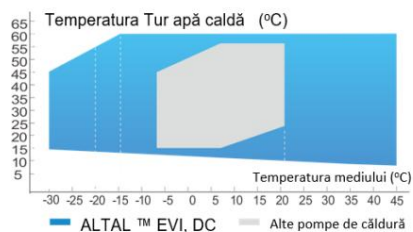
\* Contributes to a quiet neighborhood environment.

**Energy efficiency A+++.**

Only FULL SPLIT heat pumps (with compressor installed inside the house and the rest of the components) can actually have efficiency class A+++.

**EVI function.**

Only EVI (vapor injection) technology can make a heat pump operate efficiently at temperatures of +7 ... -25 o C. Without this technology, the heat pump either does not work, or its performance decreases greatly.



**High winter performance.**

With ALTAL™ F Series heat pump, it consists of an outdoor unit (fans, motors and finned heat exchanger) and an indoor unit (PCBA, DC compressor, brass plate heat exchanger, all components) connected by a set of copper pipes, wires and cables. They are easy to transport and make installation flexible. The water heat exchanger, DC compressor located inside the unit in the house to avoid freezing in cold weather days.



**Smart colorful touch control panel.**

ALTAL™ wired controller is a 4-inch smart color touch screen that is installed on the wall. With the ability of 0.1oC accuracy, temperature curve display, easy synchronization, internet access, it provides users with an easy and ergonomic way to operate, monitor.

**Smart defrost.**

Smart defrost uses pressure sliding defrost technology to determine the exact defrost time and start pressure according to the actual ambient temperature. It saves energy and makes the heat pump work with high efficiency.



MODEL		AWHP12FDELT								
Heat pump performance		Min.			Nominal			Max.		
Heating capacity/Rated capacity/COP at A7/W35y	kW	2,78	0,61	4,56	9,90	2,12	4,67	12,38	2,90	4,27
Heating capacity/Rated capacity/COP at A2/W35y	kW	2,56	0,67	3,82	9,12	2,24	4,07	10,21	3,02	3,38
Heating capacity/Rated capacity/COP at A-7/W35y	kW	2,43	0,71	3,42	6,56	2,21	2,97	8,24	2,82	2,92
Heating capacity/Rated capacity/COP at A-10/W35y	kW	2,32	0,89	2,61	5,66	2,25	2,52	7,25	2,86	2,53
Heating capacity/Rated capacity/COP at A-15/W35y	kW	2,24	0,92	2,43	4,47	2,23	2,00	6,33	2,56	2,47
Heating capacity/Rated capacity/COP at A7/W45y	kW	2,68	0,66	4,06	9,52	2,61	3,65	11,89	3,12	3,81
Heating capacity/Rated capacity/COP at A2/W45y	kW	2,48	0,70	3,54	8,06	2,68	3,01	9,66	3,31	2,92
Heating capacity/Rated capacity/COP at A-7/W45y	kW	2,79	0,78	3,58	6,30	2,53	2,49	8,78	3,31	2,65
Heating capacity/Rated capacity/COP at A-10/W45y	kW	2,47	0,87	2,84	5,42	2,52	2,15	8,34	3,32	2,51
Heating capacity/Rated capacity/COP at A-15/W45y	kW	2,97	1,34	2,22	4,29	2,31	1,86	7,00	3,34	2,10
Heating capacity/Rated capacity/COP at A7/W55y	kW	2,56	0,67	3,82	9,16	3,25	2,82	11,94	3,10	3,85
Heating capacity/Rated capacity/COP at A-25/W45y	kW	2,12	1,12	1,89	4,28	2,31	1,85	6,81	3,35	2,03
Cooling capacity/Rated capacity/EER at A35/W7y	kW	2,02	0,72	2,81	7,85	2,60	3,02	10,89	2,69	4,05
Rated operating current at A7/W35	A	9,3								
Maximum operating current	A	19								
Power supply	V/F/P	230V/50Hz/1F								
Compressor	Tip	Inverter DC, EVI, Twin Rotary								
Condenser	Tip	Brazen plate heat exchanger, stainless steel 316A								
Pressure drop at nominal flow rate	kPa	13								
Ventilator	Tip	BLDC Inverter Variable Speed								
	Each	1								
Nominal fan air flow rate	m <sup>3</sup> /h	3300								
Nominal fan power	IN	110								
Maximum outlet temperature	ȳ	55								
Refrigerant quantity	kg	3,2								
Water connection	inch	G1								
Circulation pump	Tip	BLDC Inverter Variable Speed								
	IN	10-85								
	l/min	34,8								
Ambient operating temperature	ȳ	Heating: -25~25								
		ACM: -25~+45								
	ȳ	Cooling: +20~+45								
		Heating: -25~25								
ȳ	ACM: -25~+45									
	Cooling: +20~+45									
Control panel	Tip	4", color, touch, WiFi, English, WiFi, detachable								
Outdoor unit size (HxWxD)	mm	1003x1059x404								
Indoor unit size (HxWxD) (FULL model)	mm	1017x600x600								
Net weight (inside/outside), approx.	kg	79/59								

**ALTAL™ , Inverter, EVI, cooling/heating, DHW. FULL SPLIT.**

As the elite of smart heat pumps, the ALTAL™ AWHP Series Heat Pump perfectly combines the requirements and EVI technology with inverter to produce up to 60°C domestic hot water, as well as heating/cooling stable temperature of the house even below -25°C.

\* Wider ambient temperature range for stable operation.

• 25% higher heating capacity and 17% higher COP higher than existing MONOBLOC or SPLIT type heat pumps.

• High water temperature outlet.

**Inverter technology.**

Unlike the traditional single-speed compressor heat pump, which periodically starts and stops to adjust the heating and cooling performance, the full inverter heat pump uses a variable speed compressor that can automatically adjust the required power to the lowest energy consumption and maintain the best temperature in different climate conditions. When the heating demand is high, the inverter compressor and fan motor will start to run at high speed, conversely, they will run at low speed when

the thermal requirement is low.

ALTAL™ DC Inverter technology allows the heat pump to adjust its frequency from 30 Hz to 120 Hz according to the actual heating requirements. With this technology, ALTAL™

The F series achieves an energy level of A+++ according to the ErP directive.

• Extremely high COP.

• Reduces heating time.

• Energy savings and reduction in electricity bills.

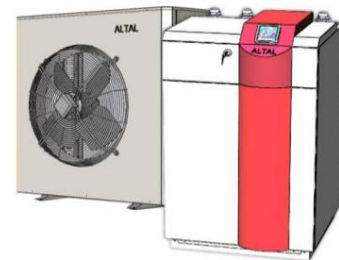
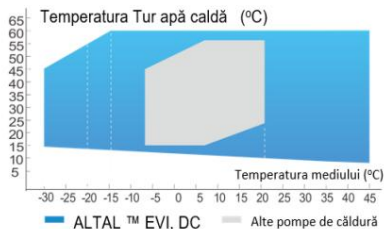
• Contributes to a quiet neighborhood environment.

**Energy efficiency A+++.**

Only FULL SPLIT heat pumps (with compressor installed inside the house and the rest of the components) can actually have efficiency class A+++.

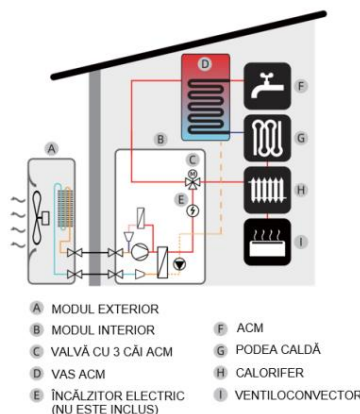
**EVI function.**

Only EVI (vapor injection) technology can make a heat pump operate efficiently at temperatures of +7 ... -25 o C. Without this technology, the heat pump either does not work, or its performance decreases greatly.



**High winter performance.**

With ALTAL™ F Series heat pump, it consists of an outdoor unit (fans, motors and finned heat exchanger) and an indoor unit (PCBA, DC compressor, brass plate heat exchanger, all components) connected by a set of copper pipes, wires and cables. They are easy to transport and make installation flexible. The water heat exchanger, DC compressor located inside the unit in the house to avoid freezing in cold weather days.



**Smart defrost.**

Smart defrost uses pressure sliding defrost technology to determine the exact defrost time and start pressure according to the actual ambient temperature. It saves energy and makes the heat pump work with high efficiency.



**Smart colorful touch control panel.**

The wired ALTAL™ controller is a color touch screen 4-inch smart wall-mounted display. With 0.1°C accuracy, temperature curve display, easy synchronization, internet access, it provides users with an easy and ergonomic way to operate, monitor.



MODEL		AWHP18FDELTA								
Heat pump performance		Min.			Nominal			Max.		
Heating capacity/Rated capacity/COP at A7/W35y	kW	7,30	1,76	4,15	9,90	2,14	4,63	19,80	4,24	4,67
Heating capacity/Rated capacity/COP at A2/W35y	kW				9,23	2,21	4,18	18,24	4,48	4,07
Heating capacity/Rated capacity/COP at A-7/W35y	kW				6,61	2,11	3,13	13,12	4,42	2,97
Heating capacity/Rated capacity/COP at A-10/W35y	kW				5,68	2,22	2,56	11,32	4,50	2,52
Heating capacity/Rated capacity/COP at A-15/W35y	kW				4,51	2,21	2,04	8,94	4,46	2,00
Heating capacity/Rated capacity/COP at A7/W45y	kW	7,02	1,95	3,59	9,27	2,23	4,16	19,04	5,22	3,65
Heating capacity/Rated capacity/COP at A2/W45y	kW				8,06	2,68	3,01	16,12	5,36	3,01
Heating capacity/Rated capacity/COP at A-7/W45y	kW				6,30	2,53	2,49	12,60	5,06	2,49
Heating capacity/Rated capacity/COP at A-10/W45y	kW				5,42	2,52	2,15	10,84	5,04	2,15
Heating capacity/Rated capacity/COP at A-15/W45y	kW				4,57	2,26	2,02	9,13	4,52	2,02
Heating capacity/Rated capacity/COP at A7/W55y	kW				9,16	3,25	2,82	18,32	6,50	2,82
Heating capacity/Rated capacity/COP at A-25/W45y	kW				4,45	2,28	1,95	8,89	4,56	1,95
Cooling capacity/Rated capacity/EER at A35/W7y	kW	7,31	1,89	3,86	7,85	2,60	3,02	15,70	5,20	3,02
Rated operating current at A7/W35	A	20,1								
Maximum operating current	A	29,17								
Power supply	V/F/P	230V/50Hz/1P								
Compressor	Tip	Inverter DC, EVI, Twin Rotary								
Condenser	Tip	Brazen plate heat exchanger, stainless steel 316A								
Pressure drop at nominal flow rate	kPa	16,2								
Ventilator	Tip	BLDC Inverter Variable Speed								
	Each	2								
Nominal fan air flow rate	m <sup>3</sup> /h	5000								
Nominal fan power	IN	2x120								
Maximum outlet temperature	ȳ	55								
Refrigerant quantity	kg	3,4								
Water connection	inch	G1								
Circulation pump	Tip	BLDC Inverter Variable Speed								
	IN	10-65								
	l/min	57								
Ambient operating temperature	ȳ	Heating: -25~25								
		ACM: -25~+45								
	ȳ	Cooling: +20~+45								
		Heating: -25~25								
		ACM: -25~+45								
		Cooling: +20~+45								
Control panel	Tip	4", color, touch, WiFi, English, WiFi, detachable								
Outdoor unit size (HxWxD)	mm	1003x1059x404								
Indoor unit size (HxWxD) (FULL model)	mm	1017x600x600								
Net weight (inside/outside), approx.	kg	116/67								

**ALTA™ , Inverter, EVI, cooling/heating, DHW. FULL SPLIT.**

As the elite of smart heat pumps, the ALTA™ AWHP Series Heat Pump perfectly combines the requirements and EVI technology with inverter to produce up to 60°C domestic hot water, as well as heating/cooling stable temperature of the house even below -25°C.

- \* Wider ambient temperature range for stable operation.
- \* 25% higher heating capacity and 17% higher COP higher than existing MONOBLOC or SPLIT type heat pumps.

\* High water temperature outlet.

**Inverter technology.**

Unlike the traditional single-speed compressor heat pump, which periodically starts and stops to adjust the heating and cooling performance, the full inverter heat pump uses a variable speed compressor that can automatically adjust the required power to the lowest energy consumption and maintain the best temperature in different climate conditions. When the heating demand is high, the inverter compressor and fan motor will start to run at high speed, conversely, they will run at low speed when

the thermal requirement is low.

ALTA™ DC Inverter technology allows the heat pump to adjust its frequency from 30 Hz to 120 Hz according to the actual heating requirements. With this technology, ALTA™

The F series achieves an energy level of A+++ according to the ErP directive.

\* Extremely high COP.

\* Reduces heating time.

\* Energy savings and reduction in electricity bills.

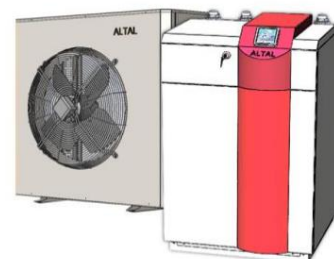
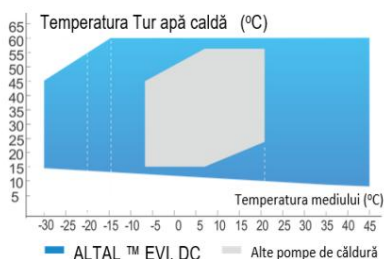
\* Contributes to a quiet neighborhood environment.

**Energy efficiency A+++.**

Only FULL SPLIT heat pumps (with compressor installed inside the house and the rest of the components) can actually have efficiency class A+++.

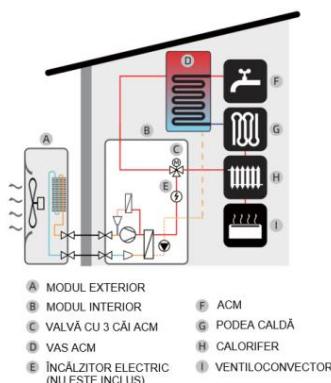
**EVI function.**

Only EVI (vapor injection) technology can make a heat pump operate efficiently at temperatures of +7 ... -25 °C. Without this technology, the heat pump either does not work, or its performance decreases greatly.



**High winter performance.**

With ALTA™ F Series heat pump, it consists of an outdoor unit (fans, motors and finned heat exchanger) and an indoor unit (PCBA, DC compressor, brass plate heat exchanger, all components) connected by a set of copper pipes, wires and cables. They are easy to transport and make installation flexible. The water heat exchanger, DC compressor located inside the unit in the house to avoid freezing in cold weather days.



**Smart defrost.**

Smart defrost uses pressure sliding defrost technology to determine the exact defrost time and start pressure according to the actual ambient temperature. It saves energy and makes the heat pump work with high efficiency.



**Smart colorful touch control panel.**

ALTA™ wired controller is a 4-inch smart color touch screen that is installed on the wall. With the ability of 0.1°C accuracy, temperature curve display, easy synchronization, internet access, it provides users with an easy and ergonomic way to operate, monitor.



MODEL		AWHP22FDELTA								
Heat pump performance		Min.			Nominal			Max.		
Heating capacity/Rated capacity/COP at A7/W35 $\ddot{y}$	kW	9,03	1,91	4,73	20,03	4,89	4,10	25,65	5,52	4,65
Heating capacity/Rated capacity/COP at A2/W35 $\ddot{y}$	kW	8,58	1,97	4,36	17,63	4,91	3,59	22,34	5,53	4,04
Heating capacity/Rated capacity/COP at A-7/W35 $\ddot{y}$	kW	6,69	2,17	3,08	13,40	4,72	2,84	17,76	5,55	3,20
Heating capacity/Rated capacity/COP at A-10/W35 $\ddot{y}$	kW	5,96	2,18	2,73	12,05	4,61	2,61	16,63	5,65	2,94
Heating capacity/Rated capacity/COP at A-15/W35 $\ddot{y}$	kW	5,56	2,14	2,60	10,55	4,42	2,39	14,12	5,76	2,45
Heating capacity/Rated capacity/COP at A7/W45 $\ddot{y}$	kW	8,58	2,11	4,07	19,00	5,58	3,41	23,80	5,93	4,01
Heating capacity/Rated capacity/COP at A2/W45 $\ddot{y}$	kW	8,20	2,17	3,78	16,98	5,58	3,04	20,13	6,03	3,34
Heating capacity/Rated capacity/COP at A-7/W45 $\ddot{y}$	kW	7,98	3,56	2,24	13,00	5,58	2,33	15,92	6,34	2,51
Heating capacity/Rated capacity/COP at A-10/W45 $\ddot{y}$	kW	7,67	3,78	2,03	11,80	5,50	2,15	13,90	6,46	2,15
Heating capacity/Rated capacity/COP at A-15/W45 $\ddot{y}$	kW	7,52	3,81	1,97	10,38	5,25	1,98	12,91	7,04	1,83
Heating capacity/Rated capacity/COP at A7/W55 $\ddot{y}$	kW	8,96	2,23	4,02	17,98	6,56	2,74	23,11	5,75	4,02
Heating capacity/Rated capacity/COP at A-25/W45 $\ddot{y}$	kW	6,94	3,92	1,77	10,31	5,32	1,94	13,11	6,75	1,94
Cooling capacity/Rated capacity/EER at A35/W7 $\ddot{y}$	kW	6,23	2,12	2,94	15,08	5,63	2,68	19,87	5,34	3,72
Rated operating current at A7/W35	A	7,9								
Maximum operating current	A	16								
Power supply	V/F/P	380-415V/50Hz/3P								
Compressor	Tip	Invertor DC, EVI, Scroll								
Condenser	Tip	Brazen plate heat exchanger, stainless steel 316A								
Pressure drop at nominal flow rate	kPa	32								
Ventilator	Tip	BLDC Inverter Variable Speed								
	Each	2								
Nominal fan air flow rate	m <sup>3</sup> /h	6600								
Nominal fan power	IN	2x130								
Maximum outlet temperature	$\ddot{y}$	55								
Refrigerant quantity	kg	3,6								
Water connection	inch	G1-1/2"								
Circulation pump	Tip	BLDC Inverter Variable Speed								
	IN	10-65								
	l/min	63								
Ambient operating temperature	$\ddot{y}$	Heating: -25~25								
		ACM: -25~+45								
	$\ddot{y}$	Cooling: +20~+45								
		Heating: -25~25								
Control panel	Tip	4", color, touch, WiFi, English, WiFi, detachable								
		1003x1059x404								
Outdoor unit size (HxWxD)	mm	1017x600x600								
Indoor unit size (HxWxD) (FULL model)	mm	156/67								
Net weight (inside/outside), approx.	kg	156/67								

**ALTA™ , Inverter, EVI, cooling/heating, DHW. FULL SPLIT.**

As the elite of smart heat pumps, the ALTA™ AWHP Series Heat Pump perfectly combines the requirements and EVI technology with inverter to produce up to 60°C domestic hot water, as well as heating/cooling stable temperature of the house even below -25°C.

- \* Wider ambient temperature range for stable operation.
- \* 25% higher heating capacity and 17% higher COP higher than existing MONOBLOC or SPLIT type heat pumps.

\* High water temperature outlet.

**Inverter technology.**

Unlike the traditional single-speed compressor heat pump, which periodically starts and stops to adjust the heating and cooling performance, the full inverter heat pump uses a variable speed compressor that can automatically adjust the required power to the lowest energy consumption and maintain the best temperature in different climate conditions. When the heating demand is high, the inverter compressor and fan motor will start to run at high speed, conversely, they will run at low speed when

the thermal requirement is low.

ALTA™ DC Inverter technology allows the heat pump to adjust its frequency from 30 Hz to 120 Hz according to the actual heating requirements. With this technology, ALTA™

The F series achieves an energy level of A+++ according to the ErP directive.

\* Extremely high COP.

\* Reduces heating time.

\* Energy savings and reduction in electricity bills.

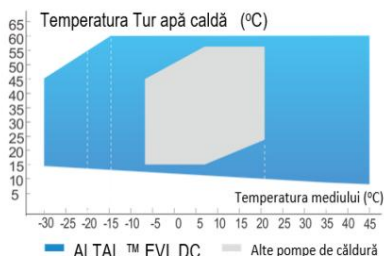
\* Contributes to a quiet neighborhood environment.

**Energy efficiency A+++.**

Only FULL SPLIT heat pumps (with compressor installed inside the house and the rest of the components) can actually have efficiency class A+++.

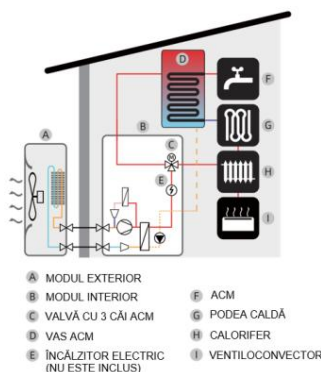
**EVI function.**

Only EVI (vapor injection) technology can make a heat pump operate efficiently at temperatures of +7 ... -25 °C. Without this technology, the heat pump either does not work, or its performance decreases greatly.



**High winter performance.**

With ALTA™ F Series heat pump, it consists of an outdoor unit (fans, motors and finned heat exchanger) and an indoor unit (PCBA, DC compressor, brass plate heat exchanger, all components) connected by a set of copper pipes, wires and cables. They are easy to transport and make installation flexible. The water heat exchanger, DC compressor located inside the unit in the house to avoid freezing in cold weather days.



**Smart defrost.**

Smart defrost uses pressure sliding defrost technology to determine the exact defrost time and start pressure according to the actual ambient temperature. It saves energy and makes the heat pump work with high efficiency.



**Smart colorful touch control panel.**

ALTA™ wired controller is a 4-inch smart color touch screen that is installed on the wall. With the ability of 0.1°C accuracy, temperature curve display, easy synchronization, internet access, it provides users with an easy and ergonomic way to operate, monitor.



MODEL		AWHP26FDELT							
Heat pump performance		Min.			Nominal		Max.		
Heating capacity/Rated capacity/COP at A7/W35y	kW	11,96	2,12	5,65	13,00		26,00	5,75	4,52
Heating capacity/Rated capacity/COP at A7/W45y	kW	11,24	2,62	4,29	12,22		24,44	6,76	3,62
Cooling capacity/Rated capacity/EER at A35/W7y	kW	10,68	2,54	4,21	11,61		23,22	7,74	3,00
Rated operating current at A7/W35	A	12,1							
Maximum operating current	A	17,60							
Power supply	V/I/P	380-415V/50Hz/3P							
Compressor	Tip	Invertor DC, EVI, Scroll							
Condenser	Tip	Braided plate heat exchanger, stainless steel 316A							
Pressure drop at nominal flow rate	kPa	33							
Ventilator	Tip	BLDC Inverter Variable Speed							
	Each	2							
Nominal fan air flow rate	m <sup>3</sup> /h	7500							
Nominal fan power	IN	2x130							
Maximum outlet temperature	ȳ	55							
Refrigerant quantity	kg								
Water connection	inch	G1-1/2"							
Circulation pump	Tip	BLDC Inverter Variable Speed							
	IN	12-85							
	l/min	74,4							
Ambient operating temperature	ȳ	Heating: -25~25							
		ACM: -25~+45							
	ȳ	Cooling: +20~+45							
		Heating: -25~25							
Control panel	Tip	4", color, touch, WiFi, English, WiFi, detachable							
		ACM: -25~+45							
Outdoor unit size (HxWxD)	mm	1003x1059x404							
Indoor unit size (HxWxD) (FULL model)	mm	1017x600x600							
Net weight (inside/outside), approx.	kg	134/77							

**ALTAL™ , Inverter, EVI, cooling/heating, DHW. FULL SPLIT.**

As the elite of smart heat pumps, the ALTAL™ AWHP Series Heat Pump perfectly combines the requirements and EVI technology with inverter to produce up to 60oC domestic hot water, as well as heating/cooling

stable temperature of the house even below -25oC.

\* Wider ambient temperature range for stable operation.

\* 25% higher heating capacity and 17% higher COP higher than existing MONOBLOC or SPLIT type heat pumps.

\* High water temperature outlet.

**Inverter technology.**

Unlike the traditional single-speed compressor heat pump, which periodically starts and stops to adjust the heating and cooling performance, the full inverter heat pump uses a variable speed compressor that can automatically adjust the required power to the lowest energy consumption and maintain the best temperature in different climate conditions. When the heating demand is high, the inverter compressor and fan motor will start to run at high speed, conversely, they will run at low speed when

the thermal requirement is low.

ALTAL™ DC Inverter technology allows the heat pump to adjust its frequency from 30 Hz to 120 Hz according to the actual heating requirements. With this technology, ALTAL™

The F series achieves an energy level of A+++ according to the ErP directive.

\* Extremely high COP.

\* Reduces heating time.

\* Energy savings and reduction in electricity bills.

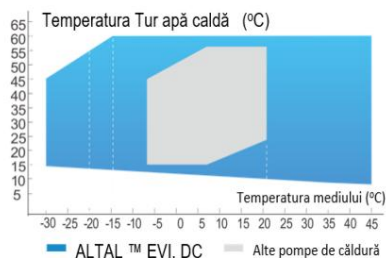
\* Contributes to a quiet neighborhood environment.

**Energy efficiency A+++.**

Only FULL SPLIT heat pumps (with compressor installed inside the house and the rest of the components) can actually have efficiency class A+++.

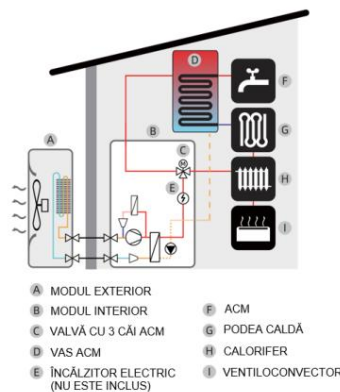
**EVI function.**

Only EVI (vapor injection) technology can make a heat pump operate efficiently at temperatures of +7 ... -25 o C. Without this technology, the heat pump either does not work, or its performance decreases greatly.



**High winter performance.**

With ALTAL™ F Series heat pump, it consists of an outdoor unit (fans, motors and finned heat exchanger) and an indoor unit (PCBA, DC compressor, brass plate heat exchanger, all components) connected by a set of copper pipes, wires and cables. They are easy to transport and make installation flexible. The water heat exchanger, DC compressor located inside the unit in the house to avoid freezing in cold weather days.



**Smart defrost.**

Smart defrost uses pressure sliding defrost technology to determine the exact defrost time and start pressure according to the actual ambient temperature. It saves energy and makes the heat pump work with high efficiency.



**Smart colorful touch control panel.**

ALTAL™ wired controller is a 4-inch smart color touch screen that is installed on the wall. With the ability of 0.1oC accuracy, temperature curve display, easy synchronization, internet access, it provides users with an easy and ergonomic way to operate, monitor.



MODEL		AWHP30FDELT								
Heat pump performance		Min.			Nominal			Max.		
Heating capacity/Rated capacity/COP at A7/W35y	kW	18,06	3,82	4,73	16,00			32,00	7,24	4,42
Heating capacity/Rated capacity/COP at A7/W45y	kW	13,84	3,30	4,20	15,04			30,08	8,51	3,54
Cooling capacity/Rated capacity/EER at A35/W7y	kW	13,14	3,19	4,11	14,29			28,58	9,74	2,94
Rated operating current at A7/W35	A	15,3								
Maximum operating current	A	22,15								
Power supply	V/F/P	380-415V/50Hz/3P								
Compressor	Tip	Invertor DC, EVI, Scroll								
Condenser	Tip	Braze plate heat exchanger, stainless steel 316A								
Pressure drop at nominal flow rate	kPa	38								
Ventilator	Tip	BLDC Inverter Variable Speed								
	Each	2								
Nominal fan air flow rate	m <sup>3</sup> /h	10000								
Nominal fan power	IN	2x250								
Maximum outlet temperature	°C	55								
Refrigerant quantity	kg									
Water connection	inch	G1-1/2"								
Circulation pump	Tip	BLDC Inverter Variable Speed								
	IN	12-85								
	l/min	91,8								
Ambient operating temperature	°C	Heating: -25~25								
		ACM: -25~+45								
	Cooling: +20~+45									
	°C	Heating: -25~25								
ACM: -25~+45										
Control panel		Tip	4", color, touch, WiFi, English, WiFi, detachable							

**ALTAL™ Inverter, EVI, cooling/heating, DHW. FULL SPLIT.**

As the elite of smart heat pumps, the ALTAL™ AWHP Series Heat Pump perfectly combines the requirements and EVI technology with inverter to produce up to 60°C domestic hot water, as well as heating/cooling stable temperature of the house even below -25°C.

\* Wider ambient temperature range for stable operation.

\* 25% higher heating capacity and 17% higher COP higher than existing MONOBLOC or SPLIT type heat pumps.

\* High water temperature outlet.

**Inverter technology.**

Unlike the traditional single-speed compressor heat pump, which periodically starts and stops to adjust the heating and cooling performance, the full inverter heat pump uses a variable speed compressor that can automatically adjust the required power to the lowest energy consumption and maintain the best temperature in different climate conditions. When the heating demand is high, the inverter compressor and fan motor will start to run at high speed, conversely, they will run at low speed when

the thermal requirement is low.

ALTAL™ DC Inverter technology allows the heat pump to adjust its frequency from 30 Hz to 120 Hz according to the actual heating requirements. With this technology, ALTAL™

The F series achieves an energy level of A+++ according to the ErP directive.

\* Extremely high COP.

\* Reduces heating time.

\* Energy savings and reduction in electricity bills.

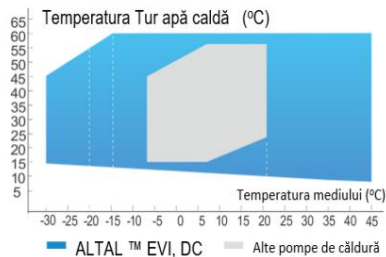
\* Contributes to a quiet neighborhood environment.

**Energy efficiency A+++.**

Only FULL SPLIT heat pumps (with compressor installed inside the house and the rest of the components) can actually have efficiency class A+++.

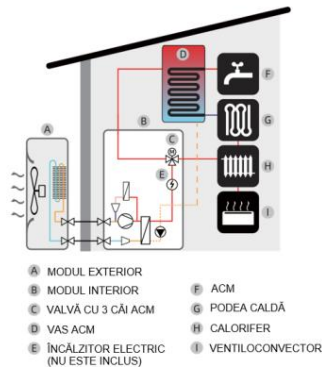
**EVI function.**

Only EVI (vapor injection) technology can make a heat pump operate efficiently at temperatures of +7 ... -25 °C. Without this technology, the heat pump either does not work, or its performance decreases greatly.



**High winter performance.**

With ALTAL™ F Series heat pump, it consists of an outdoor unit (fans, motors and finned heat exchanger) and an indoor unit (PCBA, DC compressor, brass plate heat exchanger, all components) connected by a set of copper pipes, wires and cables. They are easy to transport and make installation flexible. The water heat exchanger, DC compressor located inside the unit in the house to avoid freezing in cold weather days.



**Smart defrost.**

Smart defrost uses pressure sliding defrost technology to determine the exact defrost time and start pressure according to the actual ambient temperature. It saves energy and makes the heat pump work with high efficiency.



**Smart colorful touch control panel.**

ALTAL™ wired controller is a 4-inch smart color touch screen that is installed on the wall. With the ability of 0.1°C accuracy, temperature curve display, easy synchronization, internet access, it provides users with an easy and ergonomic way to operate, monitor.



MODEL	AWHP36FDELTA										
	Heat pump performance		Min.			Nominal			Max.		
Heating capacity/Rated capacity/COP at A7/W35y	kW	17,31	2,94	5,89	19,80	4,28	4,63	39,60	8,48	4,67	
Heating capacity/Rated capacity/COP at A2/W35y	kW				18,46	4,42	4,18	36,48	8,96	4,07	
Heating capacity/Rated capacity/COP at A-7/W35y	kW				13,22	4,22	3,13	26,24	8,84	2,97	
Heating capacity/Rated capacity/COP at A-10/W35y	kW				11,36	4,44	2,56	23,64	8,92	2,65	
Heating capacity/Rated capacity/COP at A-15/W35y	kW				9,02	4,42	2,04	19,88	8,94	2,22	
Heating capacity/Rated capacity/COP at A7/W45y	kW	16,61	3,71	4,47	18,54	4,46	4,16	38,08	9,44	4,03	
Heating capacity/Rated capacity/COP at A2/W45y	kW				16,12	5,36	3,01	35,24	9,56	3,69	
Heating capacity/Rated capacity/COP at A-7/W45y	kW				12,60	5,06	2,49	25,20	10,12	2,49	
Heating capacity/Rated capacity/COP at A-10/W45y	kW				10,84	5,04	2,15	21,68	10,08	2,15	
Heating capacity/Rated capacity/COP at A-15/W45y	kW				9,14	4,52	2,02	18,26	9,04	2,02	
Heating capacity/Rated capacity/COP at A7/W55y	kW				18,32	6,50	2,82	36,64	9,14	4,01	
Heating capacity/Rated capacity/COP at A-25/W45y	kW				9,90	4,87	2,03	18,78	10,12	1,86	
Cooling capacity/Rated capacity/EER at A35/W7y	kW	15,79	3,60	4,39	17,70	4,67	3,79	36,40	8,87	4,10	
Rated operating current at A7/W35	A	16,3									
Maximum operating current	A	29,17									
Power supply	V/F/P	380-415V/50Hz/3P									
Compressor	Tip	Invertor DC, EVI, Scroll									
Condenser	Tip	Braze plate heat exchanger, stainless steel 316A									
Pressure drop at nominal flow rate	kPa	32									
Ventilator	Tip	BLDC Inverter Variable Speed									
	Each	2									
Nominal fan air flow rate	m <sup>3</sup> /h	12000									
Nominal fan power	IN	2x300									
Maximum outlet temperature	y	55									
Refrigerant quantity	kg	6,8									
Water connection	inch	G1-1/2"									
Circulation pump	Tip	BLDC Inverter Variable Speed									
	IN	22-145									
	l/min	69,6				109,8				177	
Ambient operating temperature	y	Heating: -25-25									
		ACM: -25-+45									
	y	Cooling: +20-+45									
		Heating: -25-25									
y	ACM: -25-+45										
	Cooling: +20-+45										
Control panel	Tip	4", color, touch, WiFi, English, WiFi, detachable									

**ALTAL™ Inverter, EVI, cooling/heating, DHW. FULL SPLIT.**

As the elite of smart heat pumps, the ALTAL™ AWHP Series Heat Pump perfectly combines the requirements and EVI technology with inverter to produce up to 60°C domestic hot water, as well as heating/cooling stable temperature of the house even below -25°C.

\* Wider ambient temperature range for stable operation.

\* 25% higher heating capacity and 17% higher COP higher than existing MONOBLOC or SPLIT type heat pumps.

\* High water temperature outlet.

**Inverter technology.**

Unlike the traditional single-speed compressor heat pump, which periodically starts and stops to adjust the heating and cooling performance, the full inverter heat pump uses a variable speed compressor that can automatically adjust the required power to the lowest energy consumption and maintain the best temperature in different climate conditions. When the heating demand is high, the inverter compressor and fan motor will start to run at high speed, conversely, they will run at low speed when

the thermal requirement is low.

ALTAL™ DC Inverter technology allows the heat pump to adjust its frequency from 30 Hz to 120 Hz according to the actual heating requirements. With this technology, ALTAL™

The F series achieves an energy level of A+++ according to the ErP directive.

\* Extremely high COP.

\* Reduces heating time.

\* Energy savings and reduction in electricity bills.

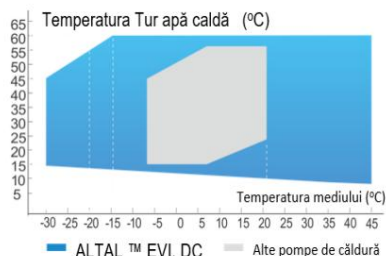
\* Contributes to a quiet neighborhood environment.

**Energy efficiency A+++.**

Only FULL SPLIT heat pumps (with compressor installed inside the house and the rest of the components) can actually have efficiency class A+++.

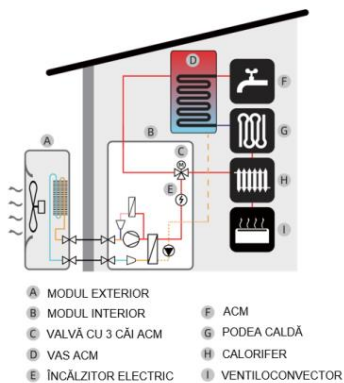
**EVI function.**

Only EVI (vapor injection) technology can make a heat pump operate efficiently at temperatures of +7 ... -25 °C. Without this technology, the heat pump either does not work, or its performance decreases greatly.



**High winter performance.**

With ALTAL™ F Series heat pump, it consists of an outdoor unit (fans, motors and finned heat exchanger) and an indoor unit (PCBA, DC compressor, brass plate heat exchanger, all components) connected by a set of copper pipes, wires and cables. They are easy to transport and make installation flexible. The water heat exchanger, DC compressor located inside the unit in the house to avoid freezing in cold weather days.



**Smart defrost.**

Smart defrost uses pressure sliding defrost technology to determine the exact defrost time and start pressure according to the actual ambient temperature. It saves energy and makes the heat pump work with high efficiency.



**Smart colorful touch control panel.**

ALTAL™ wired controller is a 4-inch smart color touch screen that is installed on the wall. With the ability of 0.1°C accuracy, temperature curve display, easy synchronization, internet access, it provides users with an easy and ergonomic way to operate, monitor.



MODEL		AWHP45FDELT								
Heat pump performance		Min.		Nominal			Max.			
Heating capacity/Rated capacity/COP at A7/W35y	kW	18,06	3,82	4,73	40,78	9,23	4,42	51,30	11,04	4,65
Heating capacity/Rated capacity/COP at A2/W35y	kW	17,16	3,94	4,36	37,26	9,82	3,79	44,68	11,06	4,04
Heating capacity/Rated capacity/COP at A-7/W35y	kW	13,38	4,34	3,08	28,80	9,44	3,05	35,52	11,10	3,20
Heating capacity/Rated capacity/COP at A-10/W35y	kW	11,92	4,36	2,73	24,10	9,22	2,61	33,26	11,30	2,94
Heating capacity/Rated capacity/COP at A-15/W35y	kW	11,12	4,28	2,60	21,10	8,84	2,39	28,24	11,52	2,45
Heating capacity/Rated capacity/COP at A7/W45y	kW	17,16	4,22	4,07	38,00	11,16	3,41	47,60	11,86	4,01
Heating capacity/Rated capacity/COP at A2/W45y	kW	16,40	4,34	3,78	33,96	11,16	3,04	40,26	12,06	3,34
Heating capacity/Rated capacity/COP at A-7/W45y	kW	15,96	7,12	2,24	26,00	11,16	2,33	31,84	12,68	2,51
Heating capacity/Rated capacity/COP at A-10/W45y	kW	15,34	7,56	2,03	23,60	11,00	2,15	27,80	12,92	2,15
Heating capacity/Rated capacity/COP at A-15/W45y	kW	15,04	7,62	1,97	20,76	10,50	1,98	25,82	14,08	1,83
Heating capacity/Rated capacity/COP at A7/W55y	kW	17,92	4,46	4,02	38,12	9,46	4,03	46,22	11,50	4,02
Heating capacity/Rated capacity/COP at A-25/W45y	kW	13,88	7,84	1,77	20,62	10,23	2,02	26,22	13,50	1,94
Cooling capacity/Rated capacity/EER at A35/W7y	kW	12,46	4,24	2,94	37,87	9,26	4,09	39,74	10,68	3,72
Rated operating current at A7/W35	A	18								
Maximum operating current	A	35								
Power supply	V/F/P	380-415V/50Hz/3P								
Compressor	Tip	Invertor DC, EVI, Scroll								
Condenser	Tip	Brazen plate heat exchanger, stainless steel 316A								
Pressure drop at nominal flow rate	kPa	34								
Ventilator	Tip	BLDC Inverter Variable Speed								
	Each	2								
Nominal fan air flow rate	m <sup>3</sup> /h	16000								
Nominal fan power	IN	2x420								
Maximum outlet temperature	ȳ	55								
Refrigerant quantity	kg	7,4								
Water connection	inch	G1-1/2"								
Circulation pump	Tip	BLDC Inverter Variable Speed								
	IN	22-145								
	l/min	79,2	126	189						
Ambient operating temperature	ȳ	Heating: -25~25								
		ACM: -25~+45								
	ȳ	Cooling: +20~+45								
		Heating: -25~25								
ȳ	ACM: -25~+45									
	Cooling: +20~+45									
Control panel	Tip	4", color, touch, WiFi, English, WiFi, detachable								

**ALTAL™ Inverter, EVI, cooling/heating, DHW. FULL SPLIT.**

As the elite of smart heat pumps, the ALTAL™ AWHP Series Heat Pump perfectly combines the requirements and EVI technology with inverter to produce up to 60oC domestic hot water, as well as heating/cooling stable temperature of the house even below -25oC.

\* Wider ambient temperature range for stable operation.

25% higher heating capacity and 17% higher COP higher than existing MONOBLOC or SPLIT type heat pumps.

High water temperature outlet.

**Inverter technology.**

Unlike the traditional single-speed compressor heat pump, which periodically starts and stops to adjust the heating and cooling performance, the full inverter heat pump uses a variable speed compressor that can automatically adjust the required power to the lowest energy consumption and maintain the best temperature in different climate conditions. When the heating demand is high, the inverter compressor and fan motor will start to run at high speed, conversely, they will run at low speed when

the thermal requirement is low.

ALTAL™ DC Inverter technology allows the heat pump to adjust its frequency from 30 Hz to 120 Hz according to the actual heating requirements. With this technology, ALTAL™

The F series achieves an energy level of A+++ according to the ErP directive.

Extremely high COP.

\* Reduces heating time.

Energy savings and reduction in electricity bills.

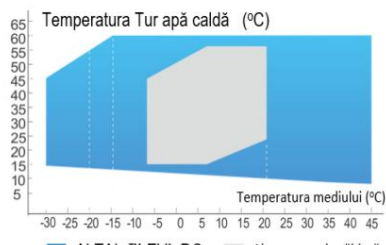
\* Contributes to a quiet neighborhood environment.

**Energy efficiency A+++.**

Only FULL SPLIT heat pumps (with compressor installed inside the house and the rest of the components) can actually have efficiency class A+++.

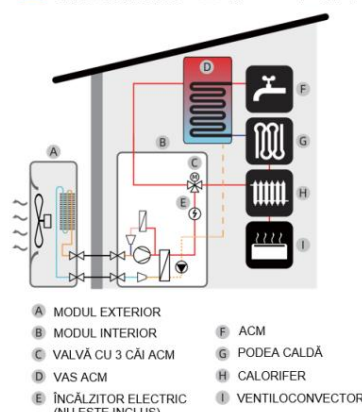
**EVI function.**

Only EVI (vapor injection) technology can make a heat pump operate efficiently at temperatures of +7 ... -25 o C. Without this technology, the heat pump either does not work, or its performance decreases greatly.



**High winter performance.**

With ALTAL™ F Series heat pump, it consists of an outdoor unit (fans, motors and finned heat exchanger) and an indoor unit (PCBA, DC compressor, brass plate heat exchanger, all components) connected by a set of copper pipes, wires and cables. They are easy to transport and make installation flexible. The water heat exchanger, DC compressor located inside the unit in the house to avoid freezing in cold weather days.



**Smart defrost.**

Smart defrost uses pressure sliding defrost technology to determine the exact defrost time and start pressure according to the actual ambient temperature. It saves energy and makes the heat pump work with high efficiency.



**Smart colorful touch control panel.**

The wired ALTAL™ controller is a color touch screen 4-inch smart wall-mounted display. With 0.1oC accuracy, temperature curve display, easy synchronization, internet access, it provides users with an easy and ergonomic way to operate, monitor.

